

Evaluating the Safe Schools Healthy Students Initiative: Perspectives from Local Evaluators

Jennifer Cross, Ph.D.

Colorado State University

Steven Rider, Ph.D.

Pacific Research & Evaluation



Complexity of Initiative

◆ Broad Focus

– Three Federal Agencies

- Education
- Health & Human Services
- Justice

– Six Project Elements

- Safe School Environment
- AOD & Violence Prevention and Early Intervention
- School and Community Mental Health Services
- Early Childhood Services
- Educational Reform
- Safe School Policies



Complexity of Initiative

- ◆ Many Programs Under One Umbrella
 - Evaluate programs separately?
 - Evaluate impact of SS/HS project as a whole?
 - What about students/families served in more than one SS/HS program?

Project Overview: Portland (OR)

Safe Environment

Portland
Police Bureau

PPS School
Police

School Safety
Specialist/Staff
1.5 FTE

Prevention & Early Intervention

Metro Family
Services
Tualatin Valley

FAST
11 schools

Mult. Co.
Juvenile
Justice

**Student
Attendance
Initiative**
3 specialists in
3 high schools

Commission
on Children &
Families

**Parent
Organizers**
15 middle schools

Mental Health

Mult.Co.
Children's MH
Partnership

**Supported
Classrooms**
19 SLC-B classrooms

PPS
Special
Education

Day TX
SLC-B Grades 1-5

Mult.Co.
Behavioral
Health

**MHCs
&
Assessments**
9 Licensed Workers

Early Childhood

Metro
Childcare
Resource

**Professional
Dev. Provider
Network**
12 classes

Mult. Co. Child
& Family
Services

**Capacity
Building**

PPS

**Early
Childhood**
Specialist 1.0 FTE

**All Students
Learn in a
Safe, Healthy,
Disciplined,
Drug-Free
Environment**

Educational Reform

PPS

**School
Improvement
Efforts**

Pacific
Research &
Evaluation

Evaluation

Safe Schools Policies

PPS

DSS
Specialist/Staff 2.0 FTE



Many Stakeholders

- ◆ Variety of Organizations and Programs
 - Differing goals
 - Different populations served
 - Varying political agendas
 - All (or at least most) want sustainability



Partnership

- ◆ Key component of SS/HS Initiative
- ◆ Measuring quality of partnership
- ◆ Interpreting the data: Partnership vs. Competition



Lessons Learned

- ◆ Project Director and Evaluator Teamwork
 - Different roles and areas of expertise
 - Should complement each other
 - Respect the contributions of the other
 - Shared goals of:
 - Providing helpful programs and services
 - Learning about these programs and services
 - Sustaining worthwhile programs and services



Lessons Learned

◆ Be Flexible

- Evaluation plan and data collection activities may change over time
- Expect ad hoc questions that require answers based on evaluation data



Lessons Learned

- ◆ Prepare for a Learning Experience
 - This project will be different
 - You may need to do things differently
 - A lot of good things can happen
 - Services provided
 - Evaluation findings
 - Lessons learned

What should we evaluate?



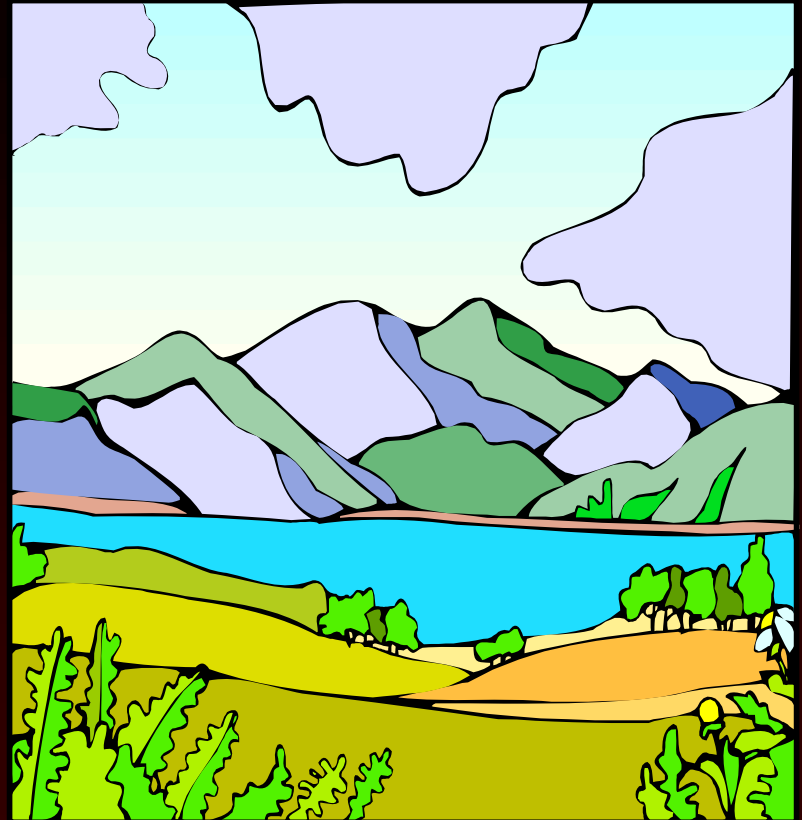
Project-Wide
Outcomes

Individual
Programs



Wide Angle View

- ◆ Project-Wide Outcomes
- ◆ Project-Wide Implementation
- ◆ Community Collaboration



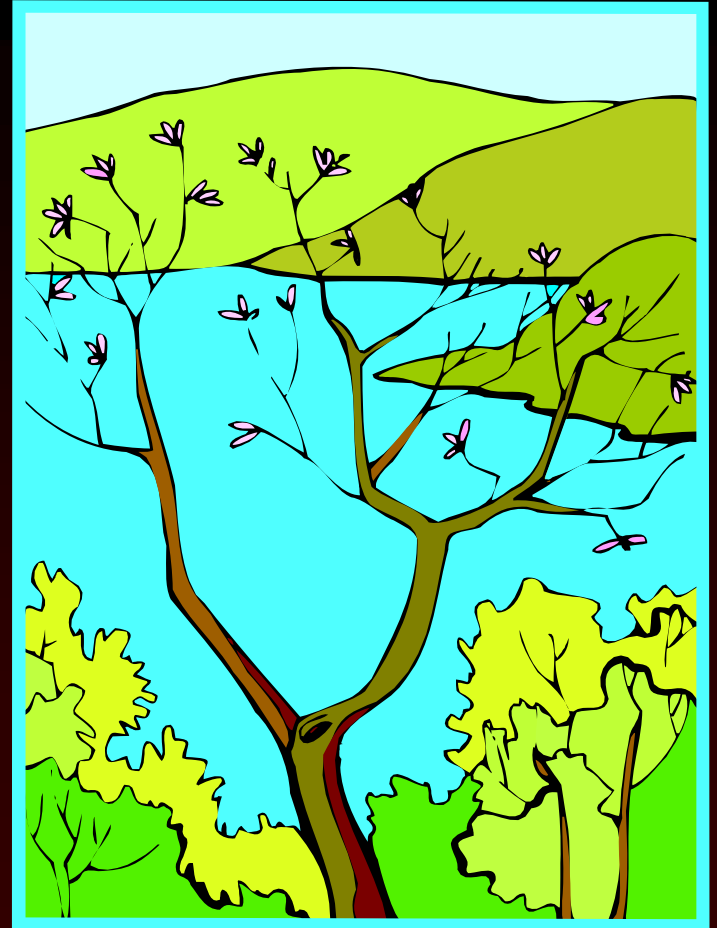
Medium Wide Focus

- ◆ Program Implementation
- ◆ Multiple programs at individual sites
- ◆ Policy Implications



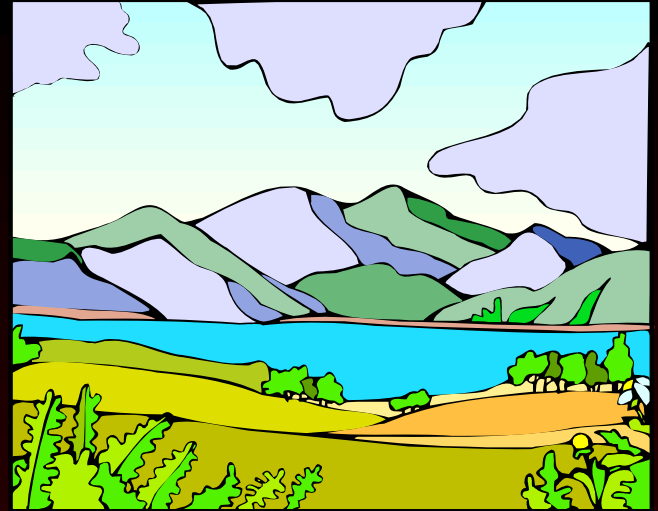
Close-up

- ◆ Individual site implementation
- ◆ Small program implementation
- ◆ Pilot project implementation
- ◆ Special/target populations



Project Wide Challenges

- ◆ What are the big goals?
- ◆ What baseline data do we have?
 - State reports
 - District-side surveys
- ◆ What current records can we use?
 - Incident records
 - Regular surveys
 - Case reports



Program Challenges

- ◆ Inter-element relationships
 - Collaborations and programs
 - Policies and programs
- ◆ Differences across sites





Lessons Learned

- ◆ Share Information
- ◆ Be Flexible
- ◆ Vary Focus
 - Sites
 - Programs
 - Elements
- ◆ Build Relationships
 - Management
 - Implementation
 - Community partners

