



# **MAKING THE MOST OF STRATEGIC PLANS**

**January 2011  
Leading for Change**

**TAS Barb Zandlo Hutchinson and  
TAS Kelly Wells**

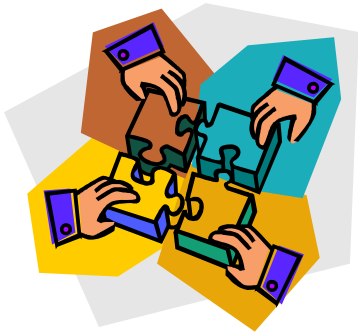
## HOW DOES THIS PROCESS WORK?

1. Conduct resource mapping
2. Acquire copies of partners strategic plans
3. Conduct an analysis of each partner's activities
4. Identify areas that integrate with this initiative
5. Use the information gathered in steps 1-5



## WHAT IS A SYSTEM?

A regularly interacting or interdependent group of items forming a unified whole.



Source: Merriam-Webster Dictionary



## THE CASE FOR INTEGRATION

- Integration is a sustainability strategy
- Integration results in better services for children and families
  - Avoids duplication
  - Working “smarter”, not “harder”
  - Better distribution of community funds and resources



# SPRING LAKE PARK, MN

## **Five Target Areas and Key Priorities:**

- I. High Student Performance and Achievement
- II. High Performing Staff (focus on data- driven decision-making)
- III. Enhanced Family and Community Partnerships
- IV. Safe, Supportive, and Welcoming Schools
- V. Effective Resource Management



# INTEGRATING SSHS WITH DISTRICT PLAN

## SSHS Focus Area 1: Safe Schools

- Safety training for district and partner staff
- School security audits
- Facilities improvements
- Improved partnerships with 3 municipal police departments
- Policy review and alignment
- Information systems improvements



Target Area IV:  
Safe,  
Supportive,  
and Welcome  
Schools



# INTEGRATING SSHS WITH DISTRICT PLAN

## SSHS Focus Area 2: Student & Family Support

- Big Brothers Big Sisters mentoring program
- Afterschool programming
- Family strengthening services
- School based case management services
- Mental health services
- Early childhood services (screening, therapeutic preschool, parent and staff training)
- Drug and violence prevention programs and services

Target Area III:

Enhanced  
Family and  
Community  
Partnerships



# INTEGRATING SSHS WITH DISTRICT PLAN

## SSHS Focus Area 3: School Climate Improvement

- Capacity building in family strengthening strategies
- Evidence-based climate improvement at all levels
  - Early Childhood: Second Step
  - Elementary: Responsive Classroom
  - Middle School: Olweus
  - High School: Smaller Learning Communities
- Integration of afterschool with school day efforts



Target Area IV:  
Safe,  
Supportive and  
Welcoming  
Schools






# INTEGRATING SSHS WITH DISTRICT PLAN

## SSHS Evaluation Efforts

- 7% of budget supports local evaluation
- Tracks both process and outcomes
- Used for program monitoring and improvement
- Includes training to increase capacity
- Facilitates data-driven decision-making



Target Area II:  
High  
Performing  
Staff; data-  
driven decision  
making



# INTEGRATING SSHS WITH DISTRICT PLAN

## SSHS Key Partners

- Blaine, Fridley, SLP Police Departments
- Anoka County Social Services & MH
- Family & Children's Collaborative of Anoka County
- Emma B. Howe YMCA
- Big Brothers Big Sisters of the Greater Metropolitan Area



Anoka  
Target Area III:  
Enhanced  
Family and  
Community  
Partnerships



# INTEGRATING SSHS WITH DISTRICT PLAN

## SSHs Management and Funding

The HAVENS Safe Schools Healthy Students


Initiative is coordinated through

District 16's Community Services Department

and is funded by the U.S. Departments of

Education, Justice, and Health and Human

Services.



Target Area IV:  
Effective  
Resource  
Management



# CHESTER COUNTY, SC

## SS/HS Strategic Plan

### **Mission Statement**

“To provide a learning environment for Chester County school children that is safe and nurturing and where all children have access to the physical, emotional, and mental health support systems that will make them successful in school, home, and community.”



# CHESTER COUNTY, SC

## Integration with Clemson Extension

### Short Term Goals (over the next year)

#### Goal 1 – Publicize Activities

Strategy/Action Step 1.2 – Make contact with every independent business in Chester County

Strategy/Action Step 1.7 – Talk to local area churches

#### Goal 3 – Increase the Number of Volunteer Leaders

Strategy/Action Step 3.1 – Ask current leaders to refer or recommend someone that may be interested



Promote the work of partnering organizations through an aggressive media campaign



# CHESTER COUNTY, SC

## Integration with Clemson Extension

### Short Term Goals (over the next year)

Goal 6 – Increase the Number of After-School Programs

Strategy/Action Step 6.4 – Research grant opportunities

Goal 7 – Offer 4-H Activities in the Community Each

Month

Strategy/Action Step 7.2 – Identify business sponsors for each activity



Form a sub-committee to research and identify viable grants and other funding sources



# CHESTER COUNTY, SC


## Integration with Clemson Extension

Long Term Goals (over the next 5 years)

Goal 1 – Develop a campaign of Funding Over the Next Five Years

Strategy/Action Step 1.2 – Establish an annual fundraising campaign

Strategy/Action Step 1.3 – Identify potential contributors to solicit



Partnering organizations will look for funding, monetary, and resource




# CHESTER COUNTY, SC

## Integration with SC Dept. of Mental Health

### Two Year Goals

#### Community Child and Adolescent Services

- Increase the number of school-based programs by 10 with rural area schools from 178 to 188
- Increase out-stationed DMH staff by 3 in DSS County Office (from 18 counties to 21 counties)
- Add 1 new MST program (Greenville) and add 1 Intensive Family Service team in one rural county
- In conjunction with Education, Training, and Research Dept., train all 17 Community DMH Centers on an Evidence-Based Best Practice Model for Children and Youth



Potential opportunities to sustain “functions” of school-based mental health programs





## ACTIVITY

1. Take a few minutes to have each partner talk about their agencies' strategic plan.
2. Carefully go through the plan, highlighting goals, objectives, mission, vision, etc. that align or overlap with the goals and objectives of your SS/HS initiative.
3. Discuss what this alignment or overlap means to the current and future work of the grant.

