



Fond du Lac School District, Fond du Lac, WI

Christie Reese, Project Director



Background

- Fond du Lac – North-Eastern Wisconsin
- Small urban area
- Demographics as of 2010

47,970 – Population FDL and NFDL

95% white

2% Hispanic (any origin)

2% Black

1% Asian

18.5% households income < \$25,000 per year

8.4% City of FDL May 2011 Unemployment
Rate



Background

- 2 Districts:

Fond du Lac, SSHS grantee, 9 elementary schools, 3 middle schools, 1 high school & 1 alternative high school , approx. 7,300 students

North Fond du Lac, 1 primary school, 1 elementary school, 1 middle school, 1 high school & 1 alternative high school, approx. 1250 students.

- History of community collaboration
- Focus on Mental Health Services

Steering Committee (CMT)

22 members on Steering Committee
At least one decision-maker per organization

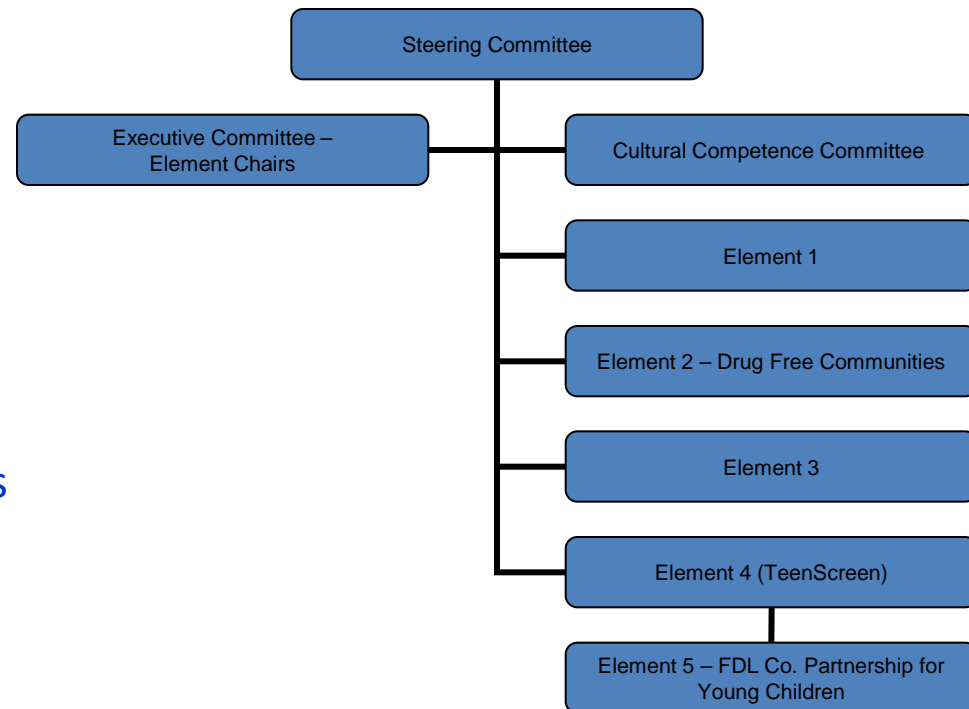
125+ school and community representatives overall
Some decision-makers, some front-line

CSI Steering Committee Members

Include:

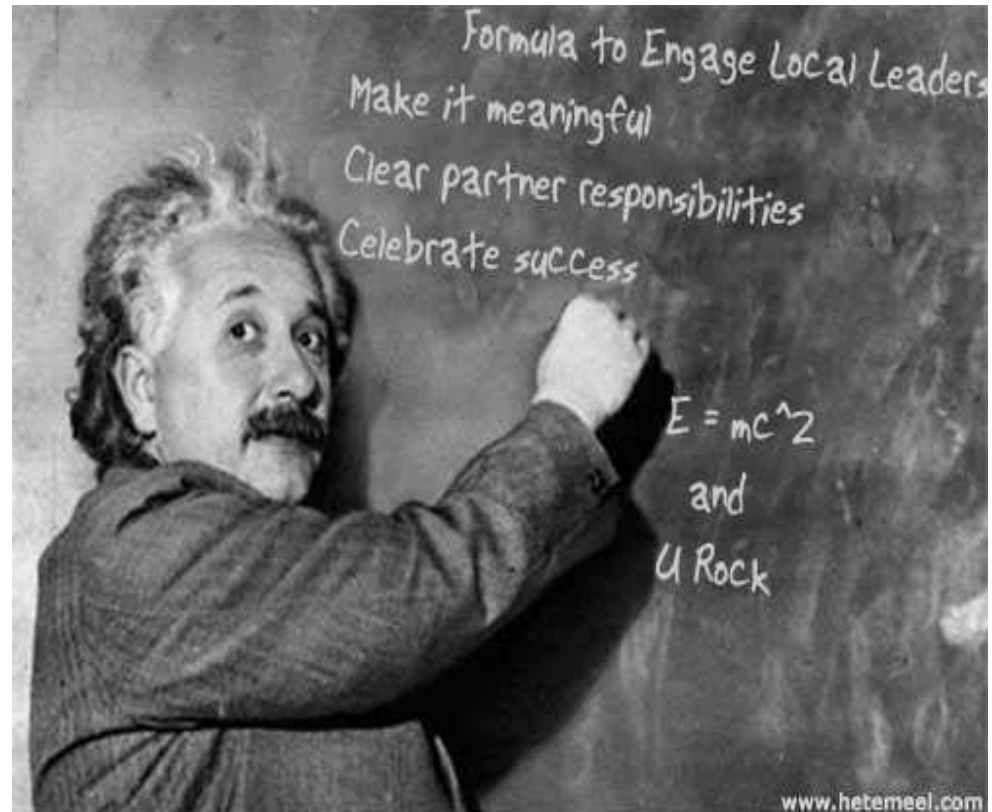
- 2 Public School Districts
- Sheriff's Department
- City Police Department
- County Juvenile Court Services
- Fond du Lac County Public MH
- 2 Hospital Systems and one other private MH Provider
- County Department of Social Services
- County Health Department
- County Birth to 3 Svs.
- Boys and Girls Club of Fond du Lac
- Drug Free Communities of Fond du Lac County

Red – School, Orange – Law Enforcement, Green – Health/Mental Health, Blue – Other partners



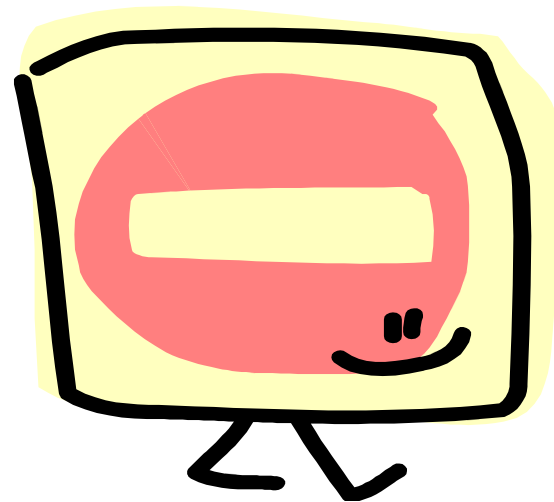
Developing Local Leaders

- Build on Success
- Allow partners to function within their area of passion and expertise
- Make it meaningful for their organizations and for them personally



Challenges in Developing Leaders

- Meetings with poor focus
- Partners serving as advisors; staff doing the work
- “Talking Heads”



Successes

- Leading for Change and Legacy Wheel processes
- Using surveys to gather Steering Committee input
- Adjusting to stay on course



Addressing the Cultural and Linguistic Needs

- Cultural competence committee
- Hispanic (2-3%) Black (2%) Hmong (1.5%)
- Focus on cultural competence
- Interpreter training – provider/professional training



Local Leaders Role in Sustainability

Survey completed – 83% participation rate (19 out of 23 members completed)

Rated key programs and outcomes into high, middle and low priority groups for sustaining

Open-ended questions:

what will it take to sustain top priorities

what resources does the community have

what resources can your organization offer

Helpful Tidbits and Parting Words

- Build on what is working in your community
- Traveling meetings
- Partner chaired committees
- Staff as facilitators, rather than drivers
- Small, deliberate steps – know why what you're doing will move you toward your goal!

