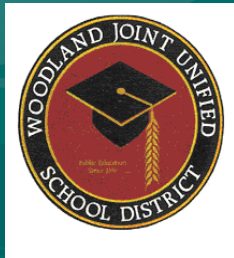


# A Team Approach To Improving Student Attendance



# Safe Schools/Healthy Students Grant

## Forming a collaborative

- **Education**
  - School District & County Office of Education
- **Law Enforcement**
  - Police, Probation & District Attorney's Office
- **Social Services**
  - Child Protective Services (CPS) & Department of Employment and Social Services (DESS)

# WJUSD Students with 15 or more absences August 2005-January 2009

	2005-06	2006-07	2007-08	Aug 08- Jan 09
Total	907	693	399	263

Decreased by 644 absences between 2005-2009

# Debra Sterling, RN MSN

## School Nurse

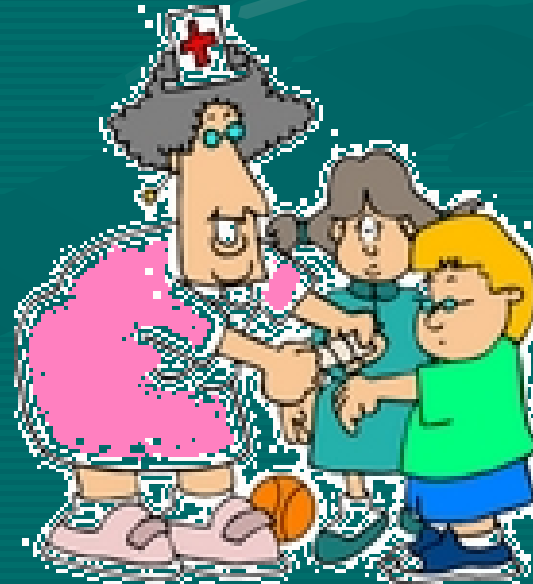
### Safe Schools/Healthy Students Grant

### Woodland Joint Unified School District



# Public Health Approach to School Dropout

## Medical Perspective Regarding School Connectivity and Attendance



# Nurse's Role At SARB

- **Verifying medical conditions affecting attendance**
  - Referrals and outreach
- **Exaggeration and Excuses**
  - Community partnerships

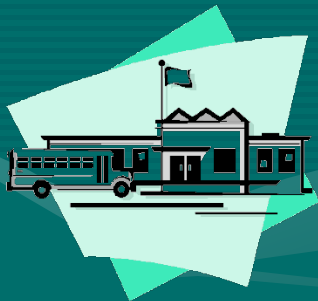


## Yolo Family Resource Center

Vision- Every child has a safe, nurturing and stimulating environment in which to learn and grow; every youth has positive social and work connections; and every family is stable and self-sufficient

# Liaise

To act between parties with a view to  
reconciling differences





# Responsibilities

- Receive student referral from staff members
- Make contact with parent and student via
  - Telephone
  - School meeting
  - Letter
  - Home visit
- Relay information gather from contact to school staff and or outside agencies for assistance

# Research

# Research

# Research

## Review the student's history in Aeries

- Attendance
- Discipline
- Services
  - Previous
  - Current

## Ask staff for any new information

- What can be done in the classroom to improve their attendance and/or grades
- What is the level of family involvement
- What is the student's medical history
- Is there any criminal background

# Grade Levels

## 9<sup>th</sup> Grade

It's important for student's to be aware of the rules and consequences in high school. This is the time to set boundaries.

## 10<sup>th</sup> & 11<sup>th</sup> Grade

Remind Them Of The Consequences

LIFESKILLS Guidance

Listening	Friendship
Self Awareness	Organization
Common Sense	Responsibilities

## 12<sup>th</sup> Grade

Develop an achievable graduation plan.

Graduating with their class  
Summer Graduation  
Adult Education  
GED

# Options

- Review and possibly change current class schedule
- Make counseling referrals
  - Academic
  - Mental Health
- Change start/end time
- Change school
- Refer to county educational programs
- Refer to outside agencies

# Continued Communication

- Student
- Parents
- School Resource Officer
- Probation Department
- School Staff

# What if that Doesn't work

---

District Attorney Mediation

Truancy Court



# Yolo County Probation Department



# Probation's Role

- Campus Safety
- Truancy Reduction





# Purpose of Home Visits

- Support and serve the whole family
- Promote partnerships between school & family
  - Effective collaborative problem solving approach
- Provide resources
- Encourage parental involvement

# Probation Department & Truancy

How truancy affects the departments  
goal/mission

- Offender accountability and competency
- Evidenced Based Practices (EBP)

# Woodland Police Department



# Codes Governing Truancy

- **Truancy 601B**

Welfare and Institutions Code

- **California Penal Code 272**

Contributing to the delinquency of a minor

# Truancy Outcomes

Victimization

Perpetrator



# School Attendance Review Board

What Police Bring To The Table

Police Validation Of SARB

# Department of Employment and Social Services



# SARB & DESS

## Promoting

- Self-sufficiency
- Strong families
- Safe Children

## In our communities





# History of DESS With SARB's

- **Early History**

- 1978 West Sacramento Multi-Disciplinary Review Team
- 1980 Woodland SARB
- 1982 Davis SARB

- **SARB & DA Mediation Boards**

- Now in Davis, Esparto, West Sacramento, Winters and Woodland

# Welfare to Work Act Goal Self-Sufficiency

**Increase Self-Sufficiency and decrease dependency on public assistance**

- **Parents:** Education, Employment Training, Employment Readiness  
(Drug/Alcohol/MH treatment needs)
- **Children:** Education – providing ladder to better and more stable employment

# Strong Families

- Encouraging Parent involvement in child's education increases parent/child bond
- Involved Parents have more resilient children
- Families with good bonds are more resilient to economic and life stresses
- Children who graduate from high school tend to have better paid and more stable employment and this leads to generational family stability

# Safe Children

- **Early identification and intervention where children may be at risk for general neglect or abuse**
  - lead to successful interventions
  - lead to more lasting changes
  - lead to the likelihood of safer children
- **Irregular attendance often linked to neglect issues**
  - need for medical/dental/vision care
  - need for counseling service
  - getting to school not dressed for the weather
  - hungry and too late for free/reduced breakfasts
  - showing other signs of neglect

# SARB & Safe Children

- **SARB's**
  - break down agency barriers to services by providing a place where agencies can educate each other on how to access services to one another
  - review the various needs that a family has that may be related to a child's irregular attendance and introduce them to services in the community, including DESS/CWS, which may be able to address those issues
  - can provide a forum where DESS/CWS can determine if there are families who are underserved by DESS in some way or if a referral to CPS is necessary

# SARB & Safe Children

## (continued)

- Prior to SARB, Woodland USD provides DESS/CWS researches agency contact/involvement with the child/family
- At SARB, DESS/CWS in conjunction with the school and other agencies, help determine if irregular attendance might be due to
  - child's basic food, medical and shelter issues not being met
  - lack of supervision secondary to parent's known or suspected mental health/drug issues
  - family disturbances – domestic violence
- DESS/CWS may suggest community based organizations which might address the child/family needs or SARB contract provisions
- DESS/CWS action may result in a referral to DESS (CalWin) or a referral to CWS for investigation



# Yolo County District Attorney's Office



# DA Mediation

- When all else fails, students and parents are referred to the **District Attorney's office for DA mediation**
  - Letters on District Attorney letterhead are sent out
  - Probation shares information on the students with the District Attorney's office
  - DA mediation provides a last chance to students and parents





# Truancy Court

- **When DA mediation fails, the court steps in to help**
  - Students and parents are sent a letter to appear in front of a Judicial Referee
  - If the initial court intervention fails with the Judicial Referee, the students are charged as truants
- OR
- Students are sent a letter to appear in front of the Juvenile Court Judge
- **What happens in court?**
  - Students are held accountable
- AND
- Students progress is monitored
- **End result: students and parents learn the court and District Attorney's Office are not going away**